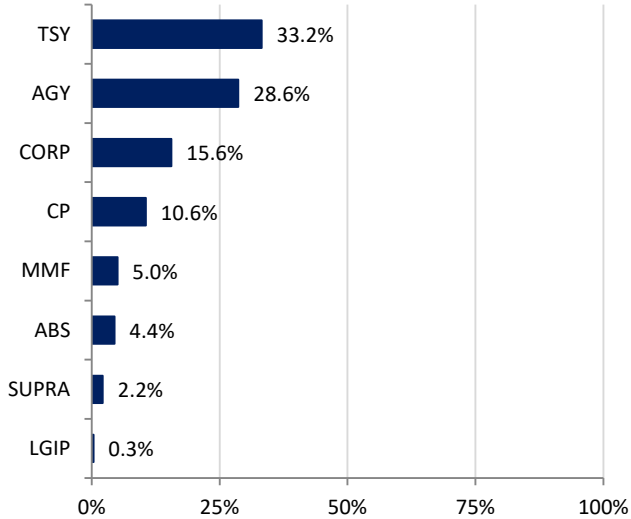
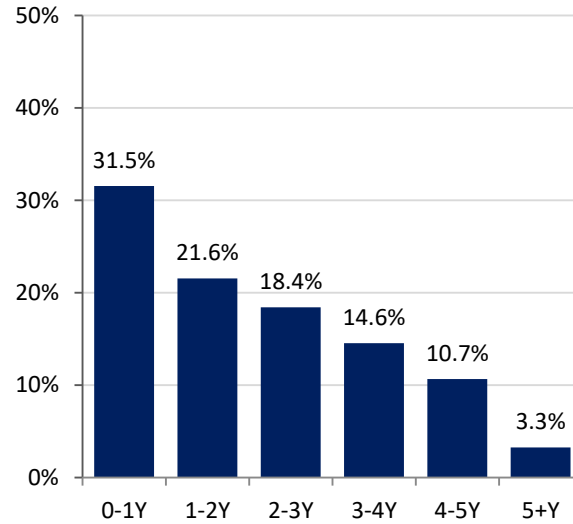


**Southern Nevada Water Authority
Portfolio Summary
As of
12/31/2024**

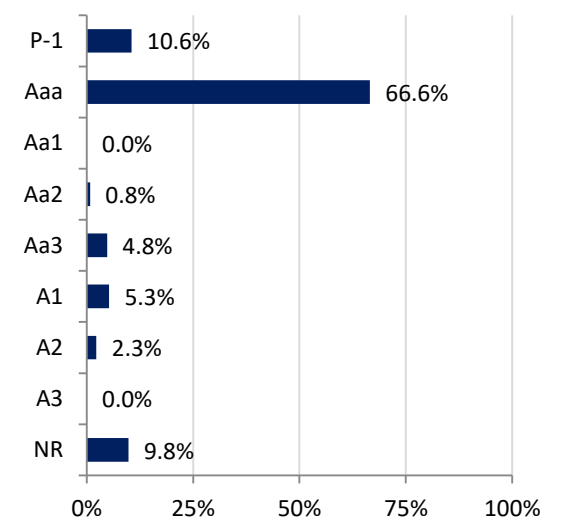
SECTOR ALLOCATION



MATURITY DISTRIBUTION



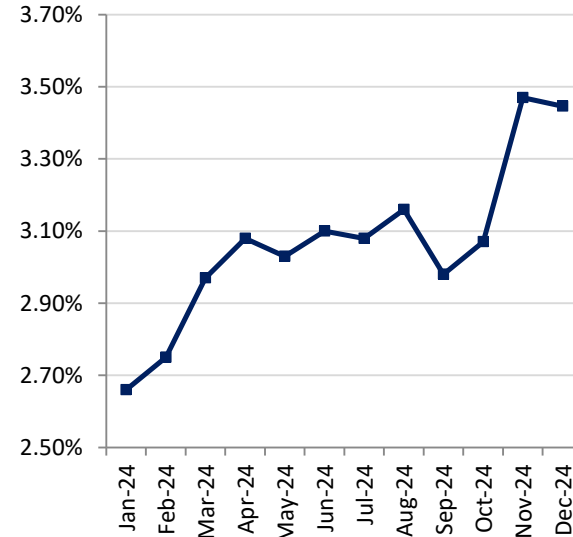
CREDIT QUALITY (MOODY'S)



ACCOUNT SUMMARY

	12/31/24	11/30/24
Market Value	\$1,466,870,724	\$1,453,050,530
Book Value	\$1,486,844,154	\$1,468,628,030
Variance	-\$19,973,430	-\$15,577,499
Par Value	\$1,503,434,967	\$1,485,382,273
Book Yield	3.45%	3.47%
Years to Maturity	2.10	2.08
Effective Duration	1.87	1.89
Earnings		
Current Month	\$4,316,813	
Fiscal YTD	\$22,938,084	

MONTH-END PORTFOLIO BOOK YIELD



ISSUERS OVER 5%*

Issuer	% Portfolio
U.S. Treasury	33.2%
FHLB	7.2%
FFCB	5.9%
FAMCA	5.6%

*Issuers in portfolio that make up more than 5% of portfolio