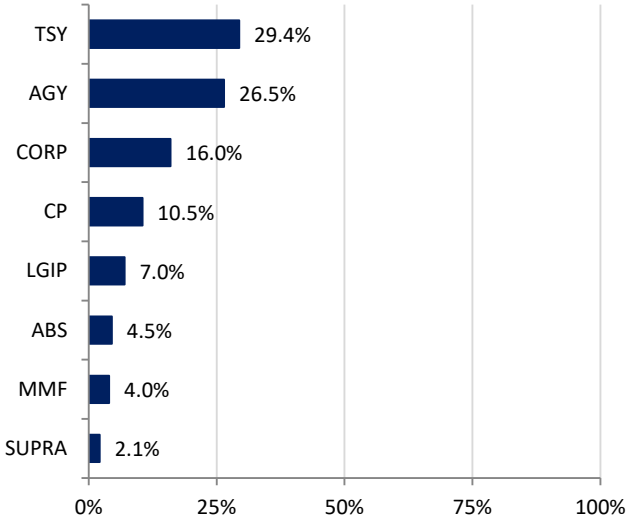
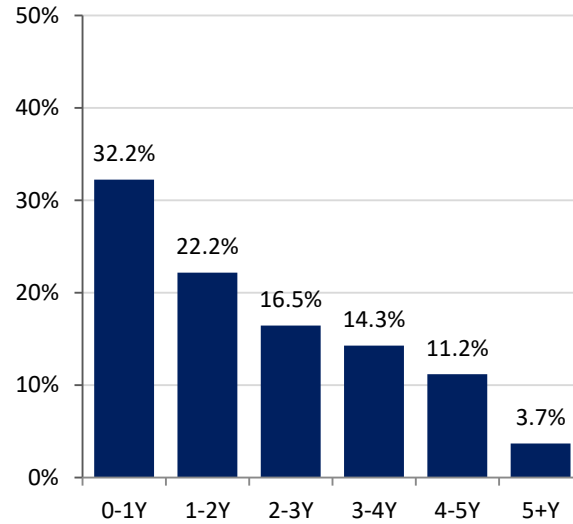


**Southern Nevada Water Authority  
Portfolio Summary  
As of  
2/28/2025**

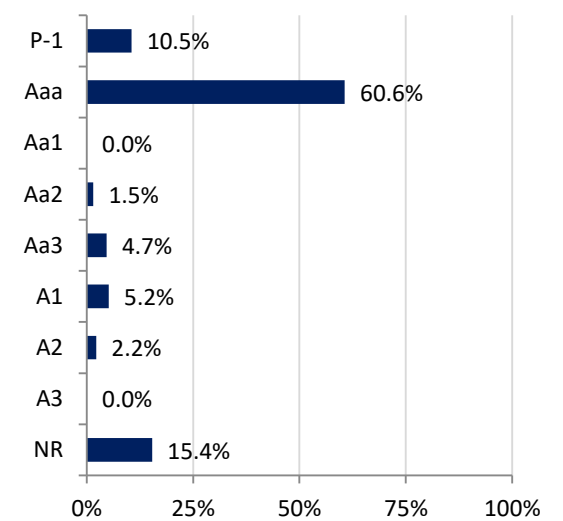
**SECTOR ALLOCATION**



**MATURITY DISTRIBUTION**



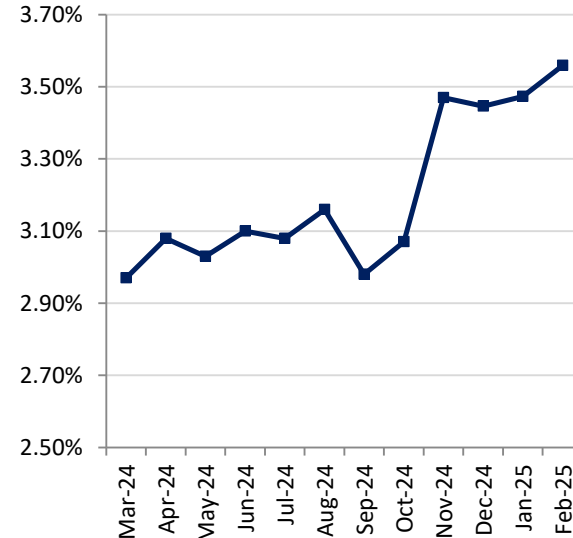
**CREDIT QUALITY (MOODY'S)**



**ACCOUNT SUMMARY**

	2/28/25	1/31/25
<b>Market Value</b>	\$1,507,148,847	\$1,481,673,954
<b>Book Value</b>	\$1,516,702,398	\$1,498,824,939
<b>Variance</b>	-\$9,553,551	-\$17,150,985
<b>Par Value</b>	\$1,532,287,987	\$1,514,973,285
<b>Book Yield</b>	3.56%	3.47%
<b>Years to Maturity</b>	2.02	2.00
<b>Effective Duration</b>	1.78	1.78
<b>Earnings</b>		
<b>Current Month</b>	\$4,175,226	
<b>Fiscal YTD</b>	\$31,170,771	

**MONTH-END PORTFOLIO BOOK YIELD**



**ISSUERS OVER 5%\***

Issuer	% Portfolio
U.S. Treasury	29.4%
LGIP	7.0%
FFCB	5.8%
FAMCA	5.5%
FHLB	5.3%

\*Issuers in portfolio that make up more than 5% of portfolio